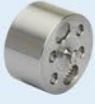
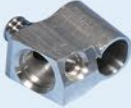


TRANS-BAR-TURN TRB-65-T

BUJOLI[®]



8.9 SEC.



4 SEC.



4.5 SEC.



5 SEC.



9 SEC.



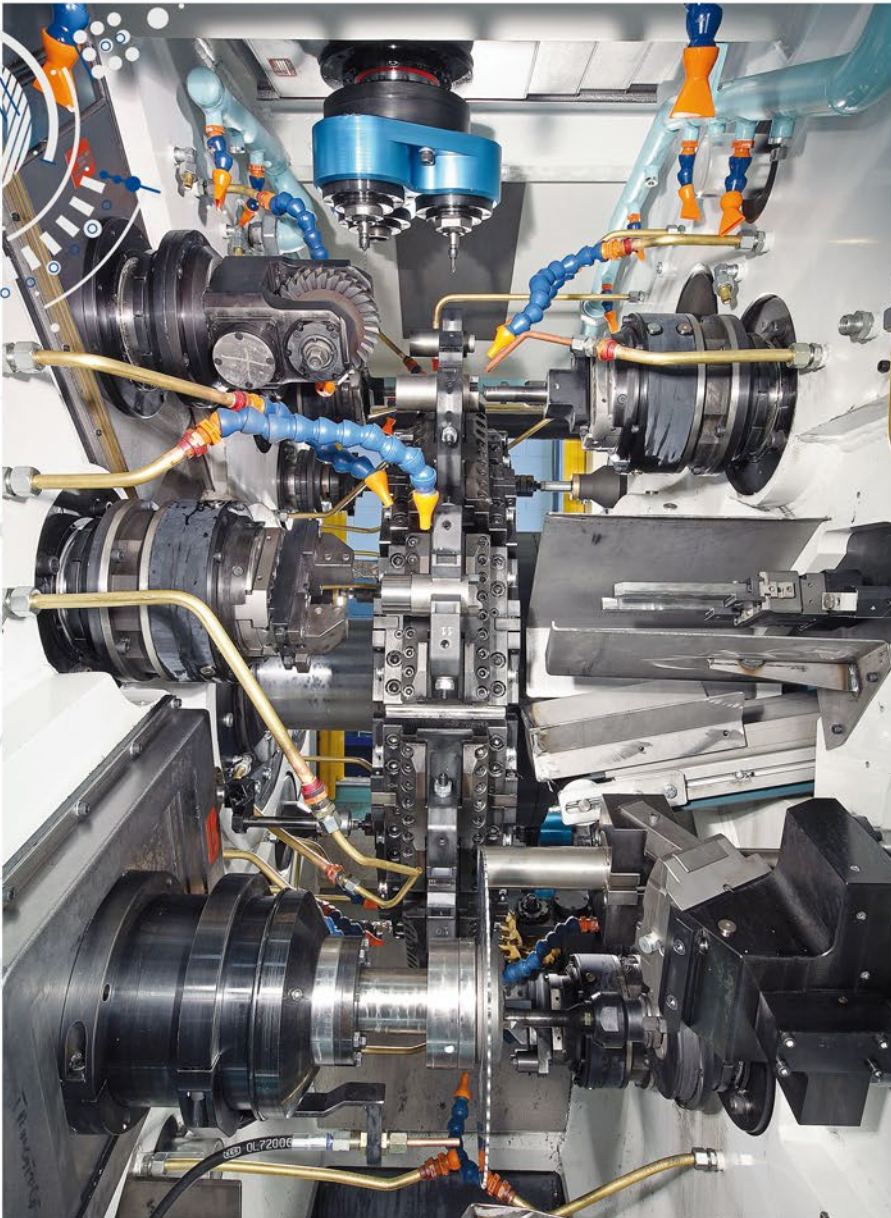
8.5 SEC.



8 SEC.



8 SEC.



BAR/COIL MULTI-SPINDLE MACHINES

TRANS-BAR-TURN

TRB-65-T

EN

CNC multi-spindle transfer machine specifically designed for the machining of precision turned parts on both directions and/or transversally from non-rotating bars/tubes, without costly secondary operations. High flexibility thanks to Multi-Process-Modules (MPM) with turning capability (rotating part machining) and/or live tools for any 3-axis operation (0.4 seconds tool-change).

IT

Macchine multi-mandrino CNC progettate specificamente per la lavorazione di pezzi di precisione torniti da barra non rotante o da tubo. I pezzi possono essere lavorati da entrambe le direzioni e trasversalmente, senza riprese di lavorazione.

Alta flessibilità grazie a Moduli Multi-Processo (MPM) con possibilità di tornitura a pezzo rotante e/o utensili motorizzati per ogni operazione a 3 assi (cambio utensile in 0,4 secondi).

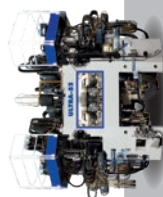
DE

CNC-Mehrspindelmaschinen speziell für die Bearbeitungen von Präzisionsdrehteilen aus nicht rotierenden Stangen oder aus Rohren konzipiert. Die Teile können von beiden Richtungen und quer bearbeitet werden, ohne Nachbearbeitungen.

Hohe Flexibilität dank Multiprozessmodulen (MPM) mit der Möglichkeit des Drehens bei rotierendem Teil und/oder motorisierten Werkzeugen für jede 3-Achsen-Operation (Werkzeugwechsel in 0,4 Sekunden).



HIGH PRODUCTION
TRANSFER MACHINES



FLEXIBLE
TRANSFER MACHINES



FMC/FMS



BAR/COIL MULTI-SPINDLE
MACHINES



MILL-TURN MULTI-SPINDLE
MACHINES



LINEAR/END-WORKING
MACHINES